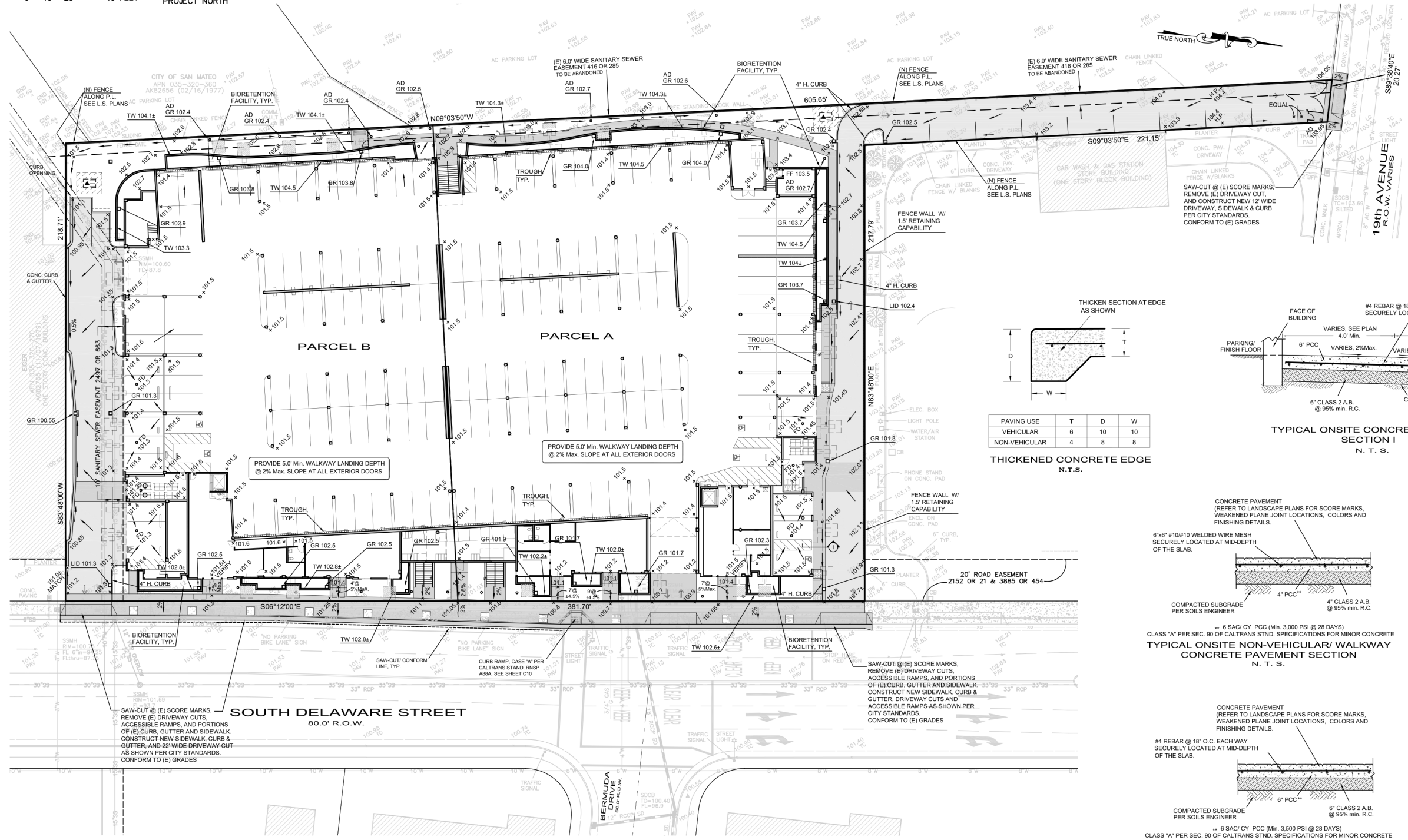
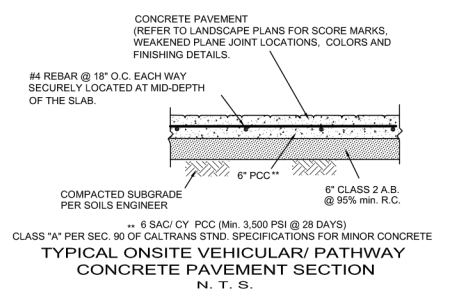
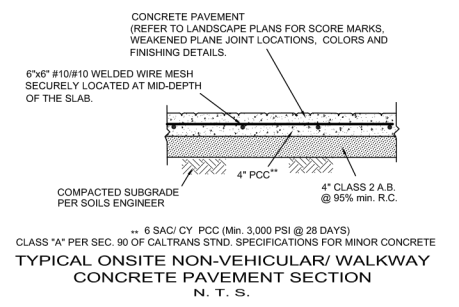
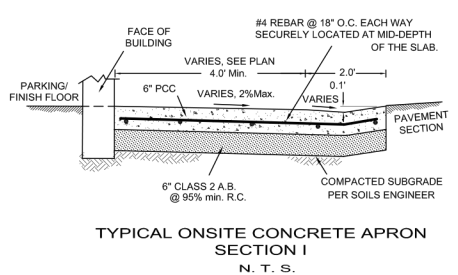


**NOTE:**  
 VERIFY PROPOSED ENTRY GRADES AT ALL DOORS  
 FRONTING S. DELAWARE, REPORT ANY CONFLICT TO  
 ENGINEER



PAVING USE	T	D	W
VEHICULAR	6	10	10
NON-VEHICULAR	4	8	8

**THICKENED CONCRETE EDGE**  
N.T.S.



**LEGEND**  
 ■ CONC. PAVING  
 ■ ASPHALT PAVING

**OFF-SITE IMPROVEMENTS:**  
 REFER TO OFF-SITE IMPROVEMENT PLANS FOR MORE DETAILS

NO.	DATE	BY	REVISIONS

SCALE 1" = 20'

DATE 02/21/2012

ENGINEER H. N.

JOB NO.

IZZATIS, NASHASHIBI R.C.E. 29528

**GRADING AND DRAINAGE PLAN**

SAN MATEO CALIFORNIA

**HUMANN COMPANY INC.**

ENGINEERING - SURVEYING

1021 BROWN AVE. LAFAYETTE, CA 94549

PH (925) 283-5000 FAX (925) 283-3578

SHEET C05

OF 11 SHEETS

JOB NO.

02/21/2012 PERMIT RESUBMITTAL